

SYMPTOM

GOLD OR FLU

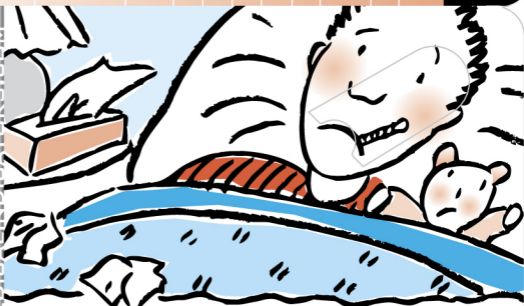
U.S. Department of Health and Human Services

September 2005

Fever	Rare	Usual; high (100°F-102°F)
Headache	Rare	Common
General Aches, Pains	Slight	Usual; often severe
Fatigue, Weakness	Sometimes	Usual; up to 2-3 weeks
Extreme Exhaustion	Never	Usual, at beginning
Stuffy Nose	Common	Sometimes
Sneezing	Usual	Sometimes
Sore Throat	Common	Sometimes
Chest Discomfort, Cough	Mild-Moderate hacking cough	Common, can be severe
Treatment	Antihistamines, Decongestant, Nonsteroidal anti-inflammatory meds	Antiviral medicines—See your doctor
Prevention	Wash hands often. Avoid close contact— anyone with a cold	Annual vaccination; antiviral medicines— See your doctor
Complications	Sinus congestion, Middle ear infection, Asthma	Bronchitis, Pneumonia; Can be life threatening

#70-5165-01

Lot: 03657 Expires: APR 2010



# COLD OR FLU THERMOMETER

## TO USE:



UNDER TONGUE



60 SEC.



BLACK DOT = TEMPERATURE



WASH AND REUSE

CE MADE IN USA 0086